

Feature Focus Guide: Dashboard

Core Product: Aloha Quick Service, Aloha Table Service
Last Updated: December 15, 2023

Contents

- About Aloha Takeout and Aloha Kitchen Integration** 4
- Configuring Dashboard** 6
 - Determining method for accessing the Dashboard 7
 - Configuring Aloha Transaction Gateway 8
 - Creating a Dashboard panel 9
 - Adding the Dashboard panel to a Dashboard screen 17
 - Replacing the floating logo with a Dashboard 19
 - Accessing a Dashboard on demand 21
 - Reserving an area of a Quick Service screen for a Dashboard 25
 - Refreshing the data 26
- Using Dashboard** 27
- Troubleshooting Dashboard** 30

Copyright and Trademark Information

The products described in this document are proprietary works of NCR Voyix.

NCR Voyix is a registered trademark of NCR Voyix.

Aloha is a registered trademark of NCR Voyix.

Microsoft and Windows are registered trademarks of Microsoft Corporation in the United States and/or other countries.

All other trademarks are the property of their respective owners.

It is the policy of NCR Voyix to improve products as technology, components, software, and firmware become available. NCR Voyix, therefore, reserves the right to change specifications without prior notice.

Not all features, functions and operations described herein are available in all parts of the world. In some instances, photographs are of equipment prototypes; therefore, before using this document, consult with your NCR Voyix representative or NCR Voyix office for the most current information.

© 2024 NCR Voyix

Atlanta

Georgia

USA

www.ncrvoyix.com

All Rights Reserved



Revision Record

Date	Version #	Description
Prior to 12/15/2022	v14.1+	Implemented support for Dashboard.
12/15/2022		Converted the document to use new templates.
01/12/2023		Updated front cover and back page to reflect new NCR branding.
12/15/2023		Updated document to reflect NCR Voyix branding.

About Aloha Takeout and Aloha Kitchen Integration

Aloha Takeout and Aloha Kitchen Integration at a Glance	
Core Product	Aloha Quick Service, Aloha Table Service
Complementary Products	No
Separate License Required?	No
Other References	Aloha Quick Service Reference Guide, Aloha Quick Service Report Guide, Aloha Table Service Reference Guide, Aloha Table Service Report Guide

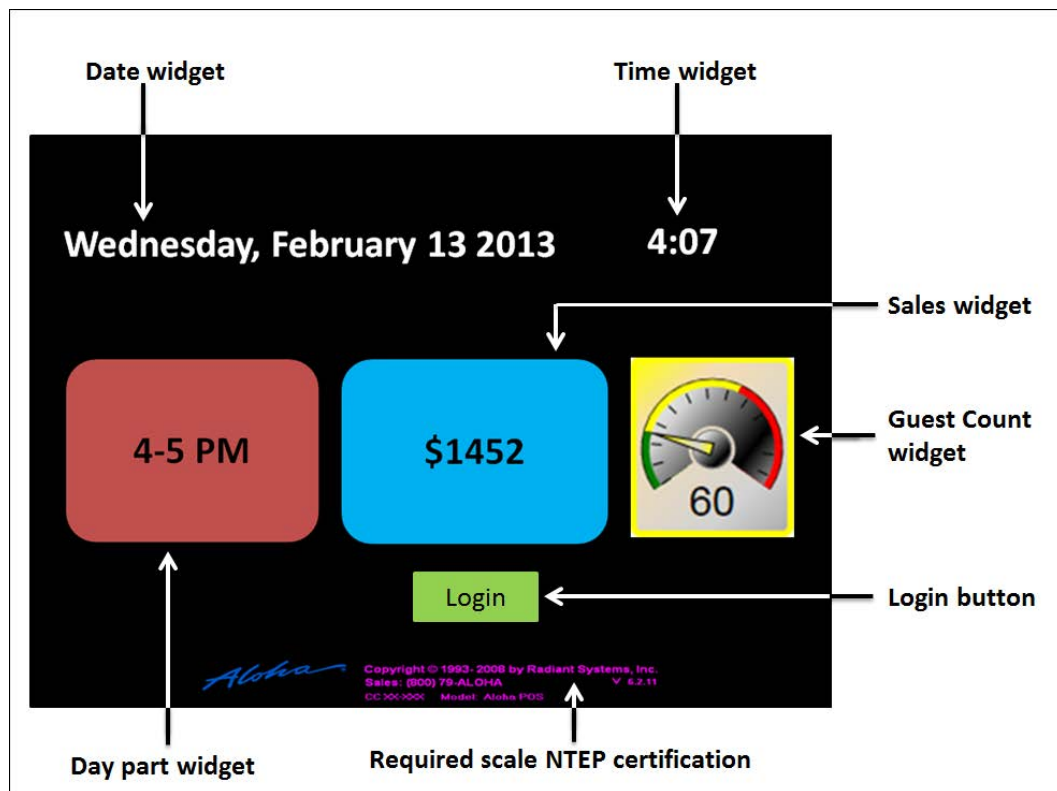


Figure 1 Dashboard Example

The busy restaurant environment of today demands that operating statistics be easily accessible. The Aloha® Point-of-Sale (POS) system offers a Dashboard for both your quick-service and table-service environments, allowing you to view and identify key performance indicators (KPIs) and other vital statistics. You can access a Dashboard and view these key metrics quickly and easily, either by displaying a Dashboard in place of the floating logo, or on demand by touching a button. In Quick Service, a Dashboard can appear in a static location on the screen. Additionally, the Dashboard compiles information from different types of reports into one interface, providing you actionable information distilled into easy to read components for decisive action on the restaurant floor.

The Aloha POS system uses widgets for displaying pre-configured key performance indicators on a Dashboard. Currently, there are five widgets available:

- Time
- Date
- Current Day Part
- Guest Check Count
- Sales

Each widget updates in a timely manner, producing real-time results. Widgets also allow you to define thresholds at which an alert appears on the screen in one of three easy to identify colors; the color of the alert changes based on each threshold. Also, you can configure an alert to appear based on whether the threshold is ascending or descending. For example, if you want the alert to appear when the labor percentage is too high, define the alert as ascending. If you want the alert to appear when sales fall below a certain amount, define the alert as descending.

It is possible to create multiple Dashboards for your store. For example, configure one to focus on sales, another to focus on guest check counts, and another on which all available widgets are present and provide data for the business day. Display the Dashboard on one or several non-customer facing terminals of your choice.

Configuring Dashboard

This section details the configuration requirements within Aloha Manager and Aloha Configuration Center (CFC) for Dashboard. If you are an experienced user, refer to Procedures at a Glance for abbreviated steps. If you prefer more detail, continue reading this document.

Dashboard Procedures at a Glance:	
If you are viewing this document using Adobe Acrobat Reader, click each link for detailed information regarding the task.	
1.	Determine the method to use for accessing the Dashboard. See page 7 .
2.	Configure Aloha Transaction Gateway for Dashboard. See page 8 .
3.	<p>Access Maintenance > Screen Designer > Table Service Screen Designer or Quick Service Screen Designer to create a Dashboard panel. See page 9.</p> <p>Add the desired widgets to the Dashboard panel.</p> <p>Available widgets include:</p> <ul style="list-style-type: none"> • Date. See page 10. • Time. See page 11. • Current day part. See page 13. • Guest check count. See page 14. • Sales. See page 15.
4.	Access Maintenance > Screen Designer > Table Service Screen Designer or Quick Service Screen Designer > Work with Dashboard Screens to add a Dashboard panel to a Dashboard screen. This step is necessary when you want to replace the floating logo with a Dashboard or for accessing a Dashboard on demand using a button. It is not necessary if you wish to reserve an area of a screen for displaying a Dashboard. See page 17 .
5.	<p>If you want to replace the floating logo with a Dashboard, you must access:</p> <ul style="list-style-type: none"> • Maintenance > System Settings > Activation Schedules to create the activation schedule, if one does not already exist. See page 20. • Maintenance > System Settings > Event Schedule to add the floating Dashboard event to an existing event schedule. See page 20.
6.	<p>If you want to use a button to access a Dashboard on demand, you must access:</p> <ul style="list-style-type: none"> • Maintenance > Screen Designer > Table Service Screen Designer or Quick Service Screen Designer to add a Dashboard button to a panel. See page 22. • Maintenance > Labor > Employees to allow an employee to view the Dashboard from the floor plan screen. See page 24.
7.	If you want to reserve an area of a Quick Service screen for a Dashboard, you must access Maintenance > Screen Designer > Quick Service Screen Designer > Work with Screens . See page 25 .

Dashboard Procedures at a Glance:

8. Access **Utilities > POS > Refresh POS & All Installed Products** to refresh the data. See [page 26](#).

Determining method for accessing the Dashboard

The method in which you want to access a Dashboard determines the steps required for configuration.

In Table Service, you can have the Dashboard:

- Appear in place of the floating logo.
-OR-
- Appear on demand by touching a button you configure on a submenu panel or a floor plan panel.

In Quick Service, you can have the Dashboard:

- Appear in place of the floating logo.
-OR-
- Appear on demand by touching a button you configure on any panel.
-OR-
- Appear continuously in an area of the screen you reserve for the Dashboard.

Regardless of the method you choose, it is through the use of Aloha Transaction Gateway (ATG) that you are able to display a Dashboard. Once you configure ATG, you then need to create a panel of the 'Dashboard' type and add the desired widgets. Then take the steps required for the method you have chosen for displaying the Dashboard.

Configuring Aloha Transaction Gateway

To initiate the Dashboard, you must navigate to the NEWDATA folder and enable the POS Dashboard in ATG.

To configure Aloha transaction gateway for Dashboard:

1. Navigate to the **NEWDATA** folder.
2. Open the **AlohaTransactionGateway.cfg** file. The file opens in Windows® Notepad®.

```

AlohaTransactionGateway.cfg - Notepad
File Edit Format View Help
<?xml version="1.0" encoding="utf-8"?>
<AtgSettings xmlns:xs1="http://www.w3.org/2001/XMLSchema-instance"
xs1:noNamespaceSchemaLocation="AtgSettingsSchema.xsd">
  <AtgSetting key="AlohaTransactionGateway">
    <AtgSetting key="IberAlivePollingTime" value="35" />
    <AtgSetting key="InterfaceServerId" value="" />
    <AtgSetting key="InterfaceTermId" value="" />
    <AtgSetting key="InterfaceServerName" value="Iber.exe" />
    <AtgSetting key="LaunchIber" value="false" />
    <AtgSetting key="ForceLaunchIber" value="false" />
    <AtgSetting key="OtherIberParams" value="" />
    <AtgSetting key="ServiceUserName" value="LocalSystem" />
    <AtgSetting key="PrintXMLWaitTime" value="5" />
    <AtgSetting key="MaxAtgDeboutSizeMB" value="2" />
    <AtgSetting key="ServicePassword" value="" />
  </AtgSetting>
  <AtgSetting key="AtgPlugins">
    <AtgSetting key="AtgBothFunctions" value="false" />
    <AtgSetting key="AtgPayPal" value="false" />
    <AtgSetting key="AtgPinPad" value="false" />
    <AtgSetting key="Atgwaitlist" value="false" />
    <AtgSetting key="AtgFreqLoyalty" value="false" />
    <AtgSetting key="AtgEMN8Loyalty" value="false" />
    <AtgSetting key="AtgBallysLoyalty" value="false" />
    <AtgSetting key="AtgGiveMobileCoupons" value="false" />
    <AtgSetting key="AtgPosDashboard" value="true" />
    <AtgSetting key="AtgDisplayBoard" value="false" />
  </AtgSetting>
  <AtgSetting key="AtgdeboutConfig">
    <AtgSetting key="Level" value="1" />
  </AtgSetting>
</AtgSettings>
  
```

Figure 2 AtgPosDashboard Setting

3. Under the '`<! -- Turns on plug ins if value = = true -- >`' header, locate '`<AtgSetting key = "AtgPosDashboard" value = "false" />`', and replace false with true.
4. Select **File > Save**.
5. Close the **AlohaTransactionGateway.cfg**.
6. Copy the **AlohaTransactionGateway.cfg** file.
7. Navigate to **Bootdrv** folder > **AlohaQS** or **AlohaTS > DATA** folder and paste the **AlohaTransactionGateway.cfg** file into the DATA folder.
8. Continue to the next **procedure**.

Creating a Dashboard panel

Regardless of the method you choose for displaying a Dashboard, you must create a panel of the 'Dashboard' type and add the desired widgets to the panel. It is possible to create multiple Dashboards for your store. For example, configure one to focus on sales, another to focus on guest check counts, and another on which all available widgets are present and provide data for the business day.

To create a Dashboard panel:

1. Select **Maintenance > Screen Designer > Table Service Screen Designer** or **Quick Service Screen Designer**. The screen designer function opens in a new window.
2. Select **Work with Panels**.
3. Select **Panel > New Dashboard Panel**.
4. Resize the **panel** to the appropriate dimensions. If you use Quick Service and want to reserve an area of the screen on which to display a Dashboard, size and position the panel to fit in the reserved area.
5. In the Properties dialog box, under the 'Appearance' group bar, configure the **appearance** you want for the panel.

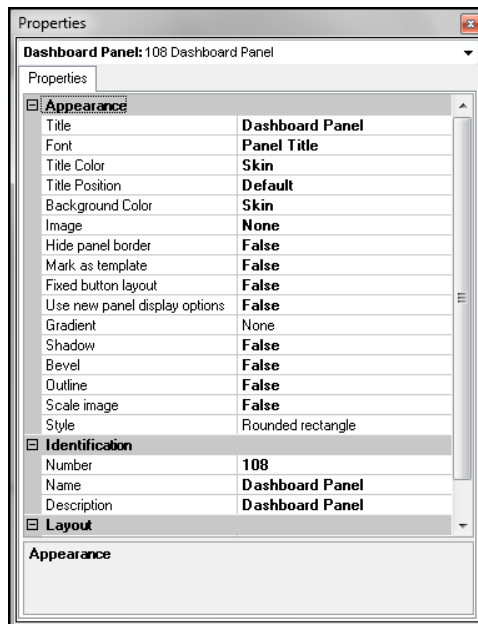


Figure 3 Dashboard Properties Dialog Box

6. Under the 'Identification' group bar, click the **ellipsis button (...)** next to 'Number' to display the Number Assignment dialog box, from which you can choose a **number**, and click **OK**.
7. Type a **name** to identify the Dashboard panel.

8. Type a **description** of the Dashboard panel.
9. Continue to the next **procedure**.

To add the desired widgets to a Dashboard panel:

1. Click inside the **Dashboard panel**.
2. Select **Panel > New Widget**. A widget of the 'Guest check count' type appears on the panel as the default selection. The Properties dialog box also reflects settings for the 'Guest check count' widget.
3. To choose a widget of a different type, make a selection from the **Type** drop-down list. You can resize, move, and configure any Dashboard widget to suit your needs.
4. Refer to the **appropriate procedure for specific instructions** on configuring each type of widget.

Creating a date widget

A 'Date' widget displays the current date of business on the Dashboard. You can configure the date to appear in one of the following formats:

- MM/DD/YY
- Day, Month and Date, Year
- Month and Date, Year

To add a 'Date' widget to a Dashboard panel:

1. With a Dashboard panel selected, select **Panel > New Widget**.

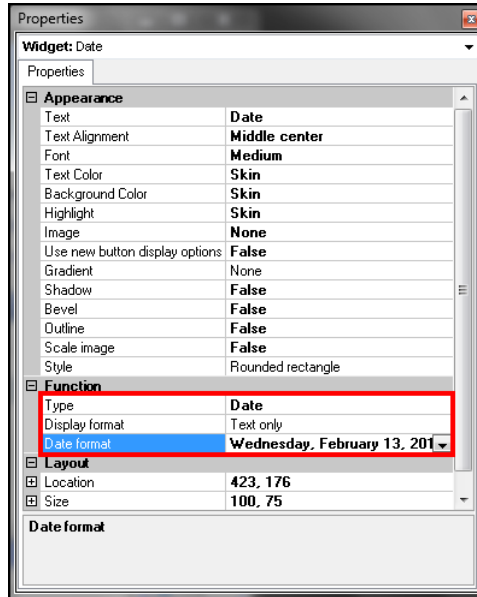


Figure 4 Widget Properties Dialog Box - Date

2. Under the 'Function' group bar, select **Date** from the 'Type' drop-down list.

Note: Text only' is the only option that appears for the 'Date' widget in 'Display format.'

3. Select the **date format** in which you want the date to appear on the Dashboard.
4. Under the 'Appearance' group bar, configure the **remaining options** to determine the appearance of the widget.
5. Save the **panel** and exit the **Screen Designer** function, or continue to the **next procedure** to add another widget.

Creating a time widget

A 'Time' widget displays the current time on the Dashboard. You can configure the time to appear in one of the following formats:

- HH:MM
- HH:MM:SS
- 24-hour clock

To add a 'Time' widget to a Dashboard panel:

1. With a Dashboard panel selected, select **Panel > New Widget**.

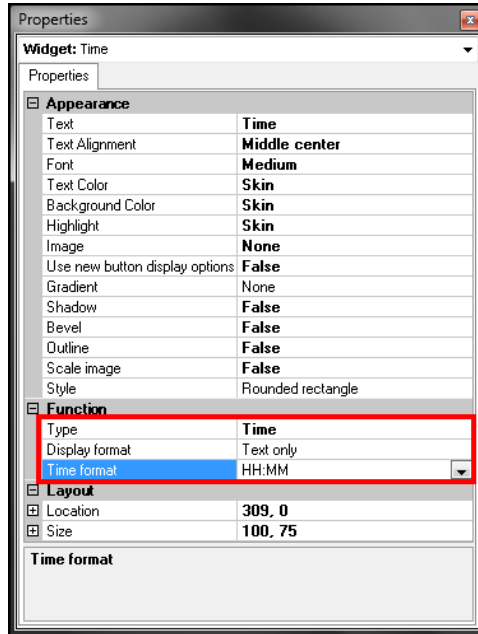


Figure 5 Widget Properties Dialog Box - Time

2. Under the 'Function' group bar, select **Time** from the 'Type' drop-down list.

Note: Text only' is the only option that appears for the 'Time' widget in 'Display format.'

3. Select the **time format** in which you want the time to appear on the Dashboard.
4. Under the 'Appearance' group bar, configure the **remaining options** to determine the appearance of the widget.
5. Save the **panel** and exit the **Screen Designer** function, or continue to the **next procedure** to add another widget.

Creating a current day part widget

The 'Current day part' widget displays the name of the active day part, if you pre-configure your day parts in Maintenance > System Settings > Day Part. Be advised that the 'Current day part' widget appears as 'Text only'.

To add a 'Current day part' widget to a Dashboard panel:

1. With a Dashboard panel selected, select **Panel > New Widget**.

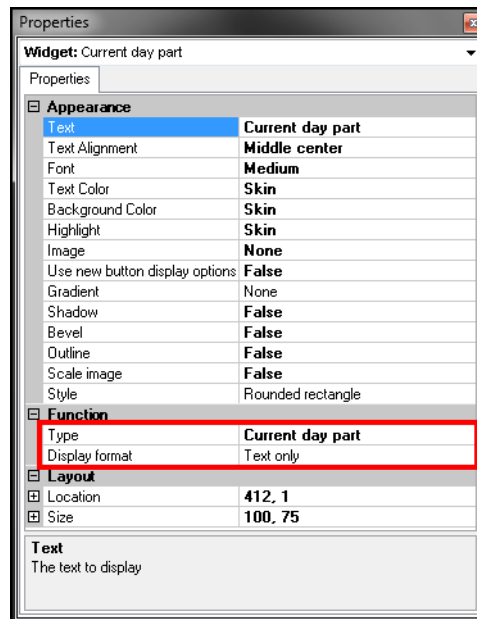


Figure 6 Widget Properties Dialog Box - Current Day Part

2. Under the 'Function' group bar, select **Current day part** from the 'Type' drop-down list.

Note: 'Text only' is the only option that appears for the 'Current day part' widget in 'Display format.'

3. Under the 'Appearance' group bar in the Properties dialog box, configure the **appearance** you want for the widget
4. Save the **panel** and exit the **Screen Designer** function, or continue to the **next procedure** to add another widget.

Creating a guest check count widget

The 'Guest Check Count' widget displays a running guest check count, which you can reset between each day part. Configure your minimum and maximum thresholds, including threshold colors, for easy identification of alerts. You can also configure this widget to alert you in ascending or descending order. Choose the method that best suits your requirements. Choose between 'Text only' or 'Gauge' for displaying the widget.

To add a 'Guest Check Count' widget to a Dashboard panel:

1. With a Dashboard panel selected, select **Panel > New Widget**.

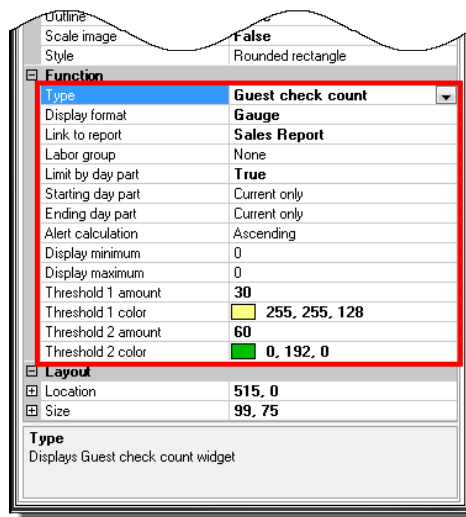


Figure 7 Widget Properties Dialog Box - Guest Check Count

2. Under the 'Function' group bar, select **Guest check count** from the 'Type' drop-down list.
3. Select whether you want the **widget** to appear as text, a graph, or a gauge from the 'Display format' drop-down list.
4. Select a **report** to appear on the screen when you touch the widget.
5. Select **Hourly** or **Salary** from the 'Labor group' drop-down list.
6. Select **True** from the 'Limit by day part' drop-down list if you want to view the sales by day parts.
7. Select **Current only** or a **specific day** part at which to start the guest check count calculation from the drop-down list.
8. Select **Current only** or a **specific day** part at which to end the guest check count calculation from the drop-down list.
9. Select **Ascending** or **Descending** from the 'Alert calculation' drop-down list. This determines if the alert for the widget occurs when the calculation is greater than or when it is less than each threshold.

10. Type the **number** at which to begin incrementing and displaying the guest check count calculation in the widget.
11. Type the **number** at which to stop incrementing and displaying the guest check count calculation in the widget.
12. Select the **color** to indicate the widget calculation is within normal parameters.
13. Type the **threshold** at which the warning alert for the widget is to appear.
14. Select the **color** to indicate you have met the first threshold from the 'Warning threshold color' drop-down list.
15. Type the **threshold** at which the critical alert for the widget is to appear.
16. Select the **color** to indicate you have met the critical threshold from the 'Critical threshold color' drop-down list.
17. Under the 'Appearance' group bar in the Properties dialog box, configure the **appearance** you want for the widget.
18. Save the **panel** and exit the **Screen Designer** function, or continue to the **next procedure** to add another widget.

Creating a sales widget

The 'Sales' widget displays the current sales, which you can reset between day parts. Configure your minimum and maximum thresholds, including threshold colors, for easy identification of alerts. You can also configure this widget to alert you in ascending or descending order. Choose the method that best suits your requirements. Choose between 'Text only' or 'Gauge' for displaying the widget.

To add a 'Sales' widget to a Dashboard panel:

1. With a Dashboard panel selected, select **Panel > New Widget**.

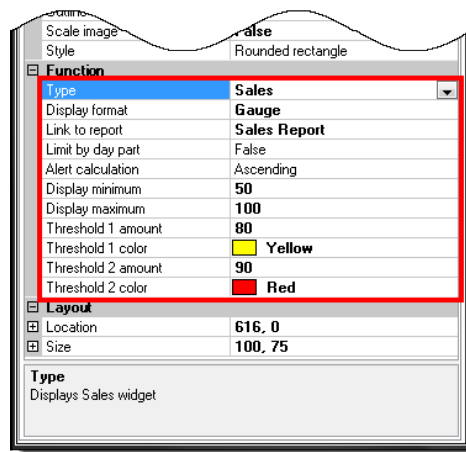


Figure 8 Widget Properties Dialog Box - Sales

2. Under the 'Function' group bar, select **Sales** from the 'Type' drop-down list.

3. Select whether you want the **widget** to appear as text, a graph, or a gauge from the 'Display format' drop-down list.
4. Select the **report** to appear on the Front-of-House (FOH) screen when you touch the widget on the Dashboard, if desired.
5. Select **True** from the 'Limit by day part' drop-down list, if you want to view sales by day part and reset the sales when a new day part begins.
6. Select **Current only** or a **specific day** part at which to start the sales calculation from the drop-down list.
7. Select **Current only** or a **specific day** part at which to end the sales calculation from the drop-down list.
8. Select **Ascending** or **Descending** from the 'Alert calculation' drop-down list. This determines if the alert for the widget occurs when the calculation is greater than or when it is less than each threshold.
9. Type the **number** at which to begin incrementing and displaying the sales calculation in the widget.
10. Type the **number** at which to stop incrementing and displaying the sales calculation in the widget.
11. Select the **color** to indicate the widget calculation is within normal parameters.
12. Type the **threshold** at which the warning alert for the widget calculation is to appear.
13. Select the **color** to indicate you have met the first threshold from the 'Warning threshold color' drop-down list.
14. Type the **threshold** at which the critical alert for the widget is to appear.
15. Select the **color** to indicate you have met the critical threshold from the 'Critical threshold color' drop-down list.
16. Under the 'Appearance' group bar in the Properties dialog box, configure the **appearance** you want for the widget.
17. Save the **panel** and exit the **Screen Designer** function.

Adding the Dashboard panel to a Dashboard screen

Once you create a Dashboard panel, you must add the new Dashboard panel to a Dashboard screen. This step is necessary when you want to replace the floating logo with a Dashboard or for accessing a Dashboard on demand using a button. It is not necessary if you wish to reserve an area of a screen for displaying a Dashboard.

To add a Dashboard panel to a Dashboard screen:

1. Select **Maintenance > Screen Designer > Table Service Screen Designer** or **Quick Service Screen Designer**.
2. Select **Work with Dashboard Screens**. The Dashboard Screen Editor dialog box appears.

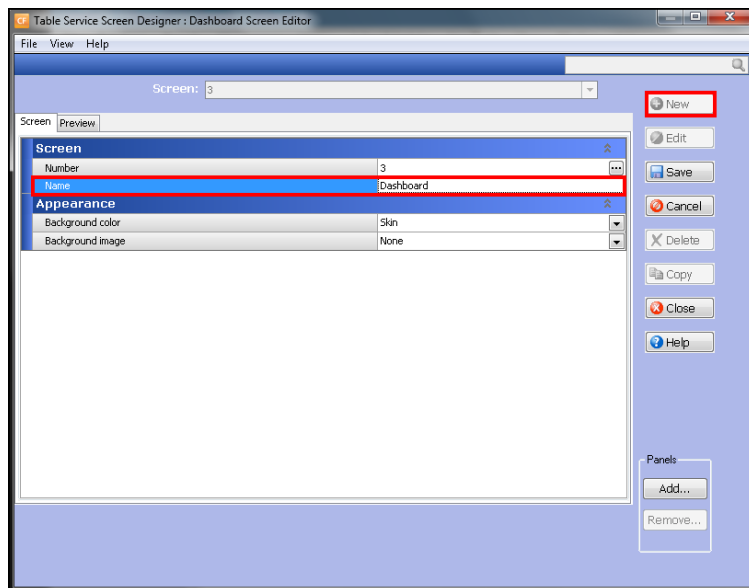


Figure 9 Dashboard Screen Editor - Screen Tab

3. Click **New**.
4. Type a **name** to identify the Dashboard screen. For example, 'Dashboard 1.'

5. Select the **Preview** tab.

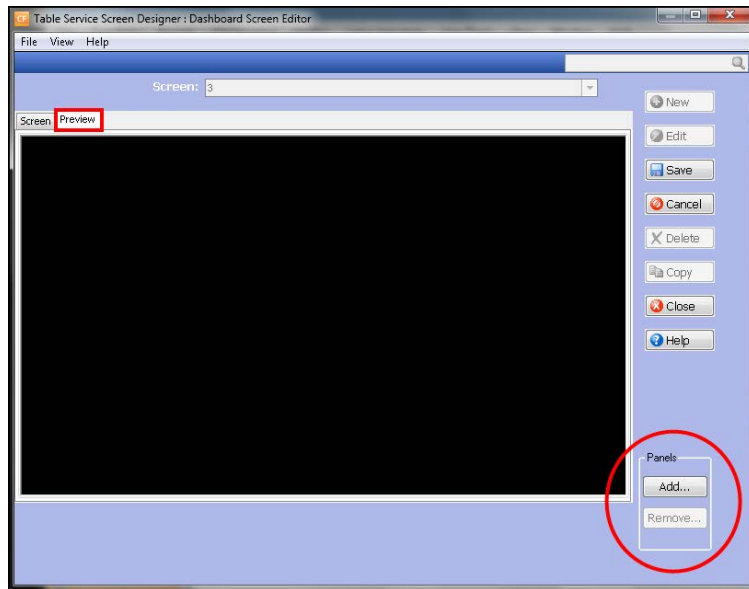


Figure 10 Dashboard Screen Editor - Preview Tab

6. Under the 'Panels' box, click **Add**. The Add Panels dialog box appears.

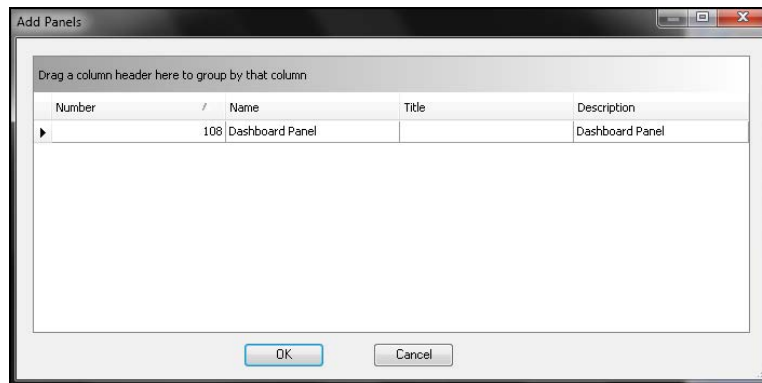


Figure 11 Add Panels Window

7. Select a **Dashboard panel** created earlier and click **OK**. The Dashboard panel appears in the preview pane.

Tip: You cannot make changes to a Dashboard panel on the preview pane. Return to Table Service Screen Designer or Quick Service Screen Designer > Work with Panels and select your Dashboard panel to make changes, such as resizing a widget.

8. Click **Save**.
9. Repeat this **procedure** for any other Dashboard panels you need to add to a Dashboard screen.

10. Click **Close** to exit the **Dashboard Screen Editor** function.
11. Exit the **Screen Designer** function.
12. Continue to the **procedure** specific to the method you want to use for presenting your Dashboard.

Replacing the floating logo with a Dashboard

If you wish to replace the floating logo with a Dashboard, the Activation Schedule and Event Schedule functions work together to establish when and what Dashboard to appear in place of the floating logo on a specific POS terminal.

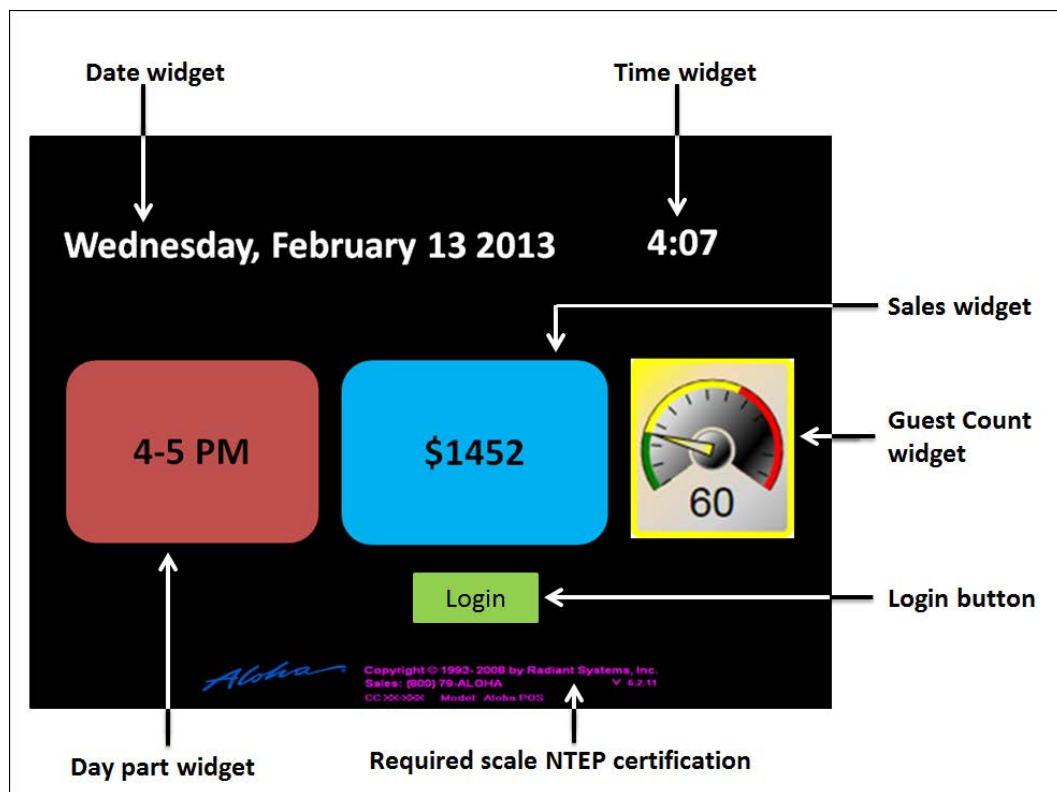


Figure 12 Dashboard Replaces Floating Logo Screen

The activation schedule you choose determines when the Dashboard is to appear, such as daily or only on Thursday, and the time it is to start, such as start of day, or at 5:00 p.m. There are two event types used for supporting the appearance of a Dashboard in place of the floating logo: Activate Floating Dashboard by Terminal and Disable Floating Dashboard by Terminal. Use Activate Floating Dashboard by Terminal to designate the Dashboard to make active, the terminal on which it is to appear, and an activation schedule with a desired recurrence and start time for displaying the Dashboard. Use Disable Floating Dashboard by Terminal to end the display of the Dashboard prior to the end of day and choose an activation schedule with a desired recurrence and start time.

Creating an activation schedule

Analyze your existing activation schedules to determine if a schedule with the desired recurrence interval and start time exists for activating the Dashboard as well as for cutting it off each day. If yes, use that activation schedule to activate the Dashboard; if not, create a new activation schedule to meet your needs. For the purposes of this document, the Dashboard recurs daily and appears in place of the floating logo all day. The POS system provides a default 'Always' activation schedule configured for start-of-day, which meets the recurrence needs and start time for replacing the floating logo with a Dashboard. The Dashboard appears all day and is reset during the end of day; however, you could create another activation schedule that starts at some point during the day, such as 8:00 p.m. to disable the Dashboard at that time and not wait until the end of day.

Adding the Activate Floating Dashboard by Terminal event type to an event schedule

Adding the Activate Floating Dashboard by Terminal event type to an event schedule designates the Dashboard screen to appear in place of the floating logo and the dates on which the Dashboard is to appear. How you are using the Event Schedule function determines whether you add this event type to an existing event schedule or add it to a new event schedule you create. For the purposes of this document, we assume you use one event schedule to which you add all events. Add the 'Disable Floating Dashboard by Terminal' event type to stop a Dashboard from appearing in place of the floating logo at a specific time of day rather than waiting for the end of day to occur to disable it.

To add the Activate Floating Dashboard event to an existing event schedule:

1. Select **Maintenance > System Settings > Event Schedule**.
2. Select the **event schedule** to edit from the drop-down list.
3. Select the **Events** tab.
4. Click the **Add** drop-down arrow, select **Activate Floating Dashboard by Terminal** as the event type, and click **OK**. Activate Floating Dashboard By Terminal appears in the list of events.
5. Select **Always** from the 'Activation Schedule' drop-down list. Because the Always activation schedule stipulates to begin at 'start of day,' you cannot edit the 'Start time' in the event definition. This information is read only. If you want to stipulate a specific time of day for the dashboard to replace the floating logo, you need to select or create an activation schedule that starts at the correct time.
6. Select the **date** on which you want the dashboard to appear in place of the floating logo in 'Start date.'
7. Select the **date** on which you no longer want the dashboard to appear in place of the floating logo in 'End date.'
8. Under the 'Activate Floating Dashboard By Terminal' group bar, select the **dashboard screen** to activate from the drop-down list.
9. Select the **specific terminal** for which you want the dashboard screen to appear in place of the floating logo.
10. Continue to the next **procedure**.

Activate Floating dashboard by Terminal event

Use the Activate Floating Dashboard by Terminal event to designate a dashboard screen to appear in place of the floating logo and the dates on which the dashboard is to appear.

Dashboard screen — Specifies the dashboard screen onto which you added a dashboard panel created for appearing in place of the floating logo. **Related Requirements:** To create a dashboard panel and a dashboard screen, select Maintenance > Screen Designer > Table Service Screen Designer or Quick Service Screen Designer.

Terminal — Designates the specific terminal for which you want the dashboard screen to appear in place of the floating logo. If you do not select a terminal, the dashboard screen appears in place of the floating logo on all terminals. We recommend using only non-customer facing terminals for displaying a dashboard.

To stop the dashboard from appearing in place of the floating logo on a terminal at a specific time of day rather than waiting for the end of day to disable it:

1. Click the **Add** drop-down arrow, select Disable Floating Dashboard by Terminal, and click OK. Disable Dashboard appears in the list of events.
2. Select the **activation schedule** that starts at the time you want to stop a dashboard from appearing in place of the floating logo.
3. Select the **date** on which you want the dashboard to appear in place the floating logo on the terminal in 'Start date.'
4. Select the **date** on which you no longer want the dashboard to appear in place of the floating logo on the terminal in 'End date.'
5. Under the 'Disable Floating Dashboard by Terminal' group bar, select the **dashboard** to disable from the drop-down list.
6. Click **Save** and exit the **Event Schedule** function.

Disable Floating Dashboard by Terminal event

Use the Disable Floating Dashboard by Terminal event to designate when to stop a dashboard from appearing in place of the floating logo prior to the end of day.

Terminal — Designates the specific terminal for which you want to stop the dashboard screen from appearing in place of the floating logo. If you do not select a terminal, the dashboard screen stops appearing in place of the floating logo on all terminals.

Accessing a Dashboard on demand

Another method by which to display a Dashboard is to access it on demand by touching a button you configure on a submenu panel or a floor plan panel (TS only), or any panel (QS only). The system

automatically adds Back and Exit buttons. Touching Back returns you to the previous screen, and Exit returns you to the floating logo or the logout screen.



Figure 13 Touching the Dashboard Button to Launch the Dashboard

To add a Dashboard button to a panel:

1. Select **Maintenance > Screen Designer > Table Service Screen Designer** or **Quick Service Screen Designer**. The screen designer function opens in a new window.
2. Select **Work with Panels**.
3. Select **Panel > Open Panel**, select a **submenu panel** or a **floorplan panel** (TS only) or any **panel** (QS only) and click **OK**.

4. Select an **available button**, or select **Panel > New Button** to create a new button. The Properties dialog box appears.

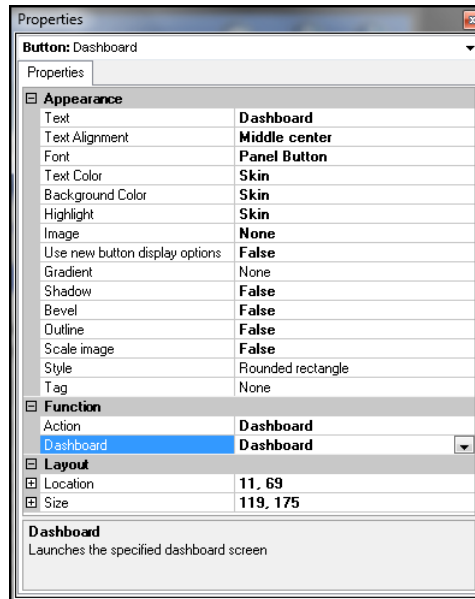


Figure 14 Dashboard Button Properties on Submenu Panel

5. Under the 'Function' group bar, select **Dashboard** from the 'Action' drop-down list.
6. Select the **dashboard screen** to display when you touch this button.
7. Configure the **remaining options** as you would for any other button.
8. Exit the **Screen Designer** function.

If you want an employee to view a dashboard specific to a job role, such as a manager, you must design a unique floor plan for that job role. Select the job code to which that employee is assigned, and specify that the floor plan for that job code.

To allow an employee, such as a manager, to view the Dashboard from the floor plan screen:

1. Select **Maintenance > Labor > Jobcodes**.
2. Select a **job code** for which you want to allow an employee, such as a manager, to view the Dashboard.

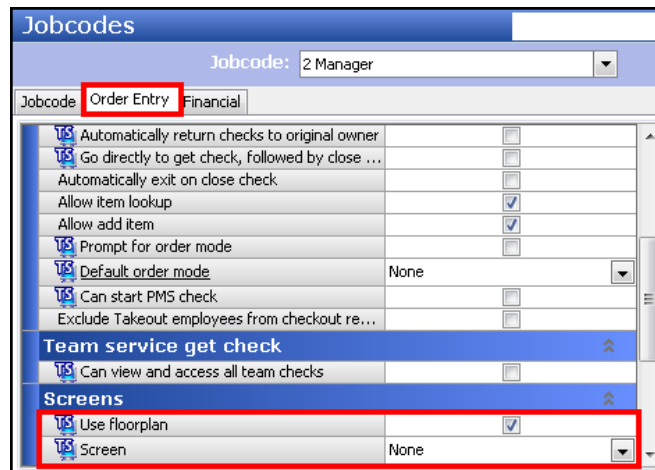


Figure 15 Labor - Jobcodes

3. Select the **Order Entry** tab.
4. Under the 'Screens' group bar, select **Use floorplan**.
5. Select the **floor plan screen** from the 'Screen' drop-down list.
6. Click **Save**.
7. Repeat the **procedure** for each job code for which you want to allow viewing of the Dashboard.
8. Exit the **Jobcodes** function.

Reserving an area of a Quick Service screen for a Dashboard

Another method by which to display a Dashboard is to reserve an area of a Quick Service screen, such as the Home screen, for displaying a Dashboard. While it is possible to place a Dashboard on any Quick Service screen, for the purposes of this document, we use the concept of reserving an area of your home screen.

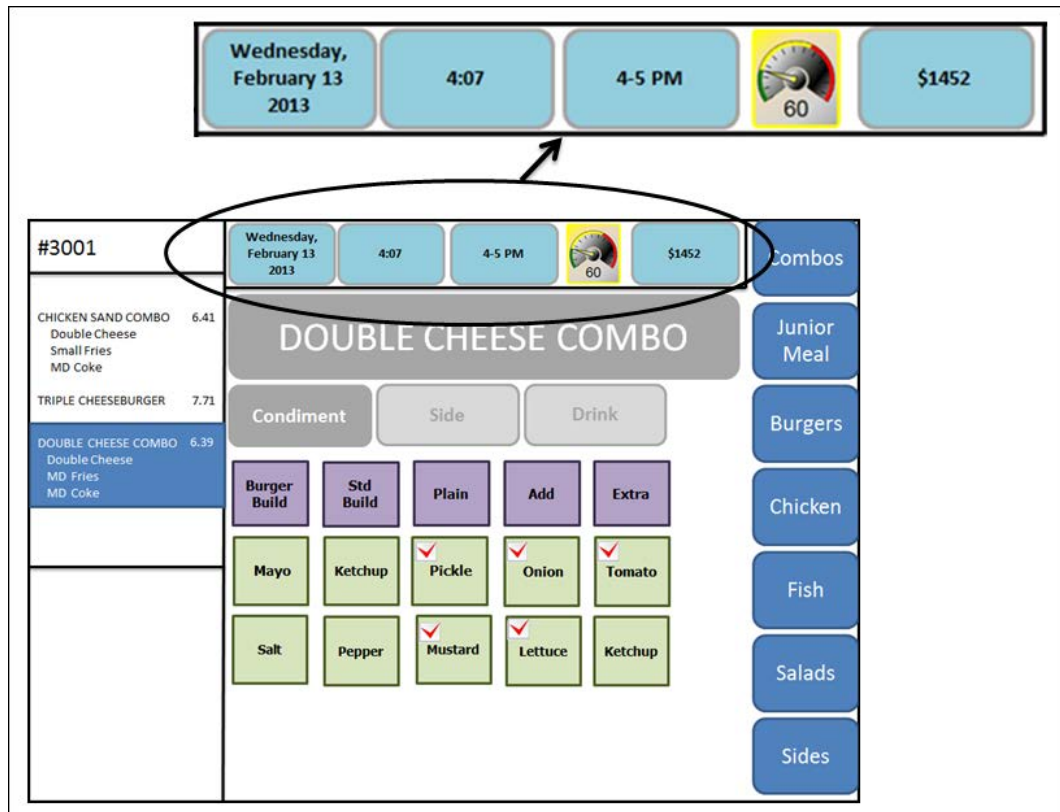


Figure 16 Sample Home Screen with Dashboard

As with any panel you create, panels must never partially overlap another panel. Each panel must cover edge to edge, or the FOH does not display the overlapped panel. Refer to the Quick Service Screen Designer Guide for more information. Once you make room for the Dashboard, you must add the Dashboard panel to your screen.

To reserve an area of a Quick Service screen for displaying a Dashboard:

1. Select **Maintenance > Screen Designer > Quick Service Screen Designer**.
2. Select **Work with Screens**.
3. Select the **screen** on which you want the Dashboard to appear.
4. Click **Edit**.
5. Select the **Preview** tab.

6. In the Panels group box, click **Add**.
7. Select the **Dashboard panel** and click **OK**. The Dashboard appears on the screen in the location you stipulated.
8. Save the **panel** and exit the **Screen Designer** function.

Refreshing the data

After all settings are in place in new Aloha Manager, it is necessary to select Utilities > POS > Refresh POS & All Installed Products to transfer the new information to the FOH terminals, or wait for the End-of-Day (EOD) process to accomplish the data refresh for you. If you run the refresh prior to the EOD process, select 'Automatically restart all POS terminals' and click OK to continue. After the data refresh is complete, all new settings become operational across the Aloha network.



Caution: Refresh data with caution and never during peak hours of operation. All FOH terminals reboot during a refresh and are down for a short period of time.

Using Dashboard

The Aloha Café uses a Dashboard to access key performance indicators (KPIs) throughout the day. The manager views guest counts and sales on a terminal that displays the Dashboard in place of a floating logo.

1. Review provided **information** on Dashboard.

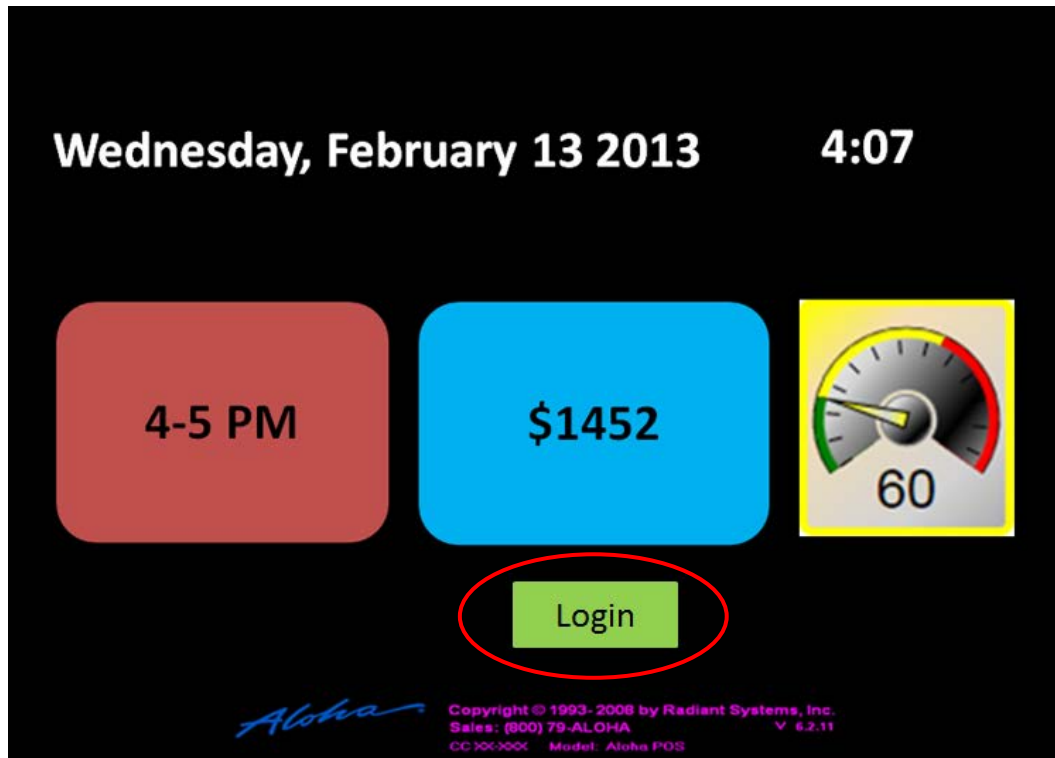


Figure 17 Dashboard In Place Of Floating Logo

2. To dismiss the Dashboard and display the home screen, (1) touch **Login** and enter the **employee ID number**, (2) scan a **finger**, when logging in to the system using Biometrics, or (3) slide your **employee mag card**.

Accessing the Dashboard on demand

The Sand Dollar restaurant allows managers to access the Dashboard on demand on a floor plan panel.

1. Touch **Dashboard**.

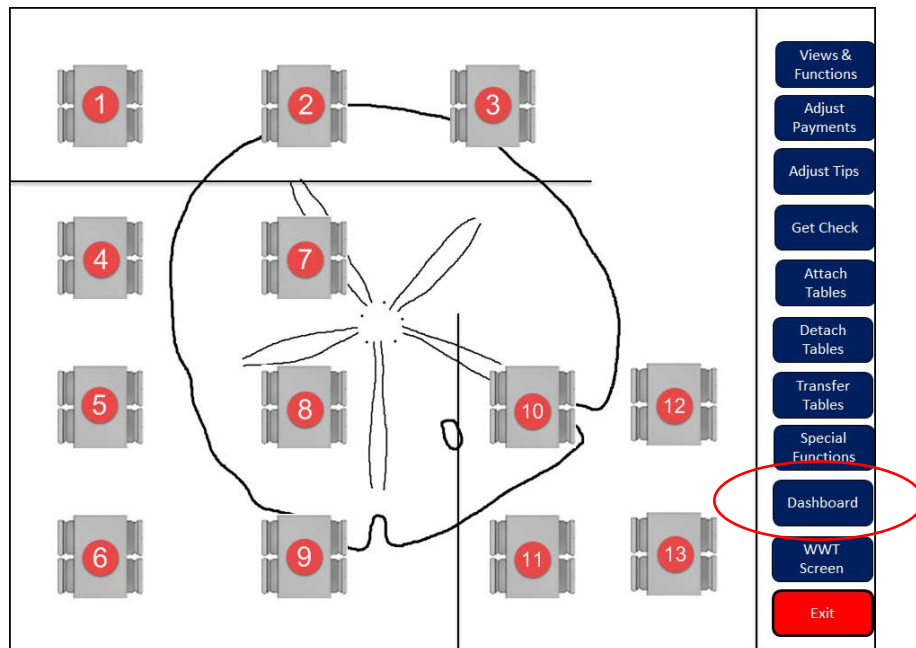


Figure 1 - 1 Access the Dashboard On Demand

The Dashboard screen appears.

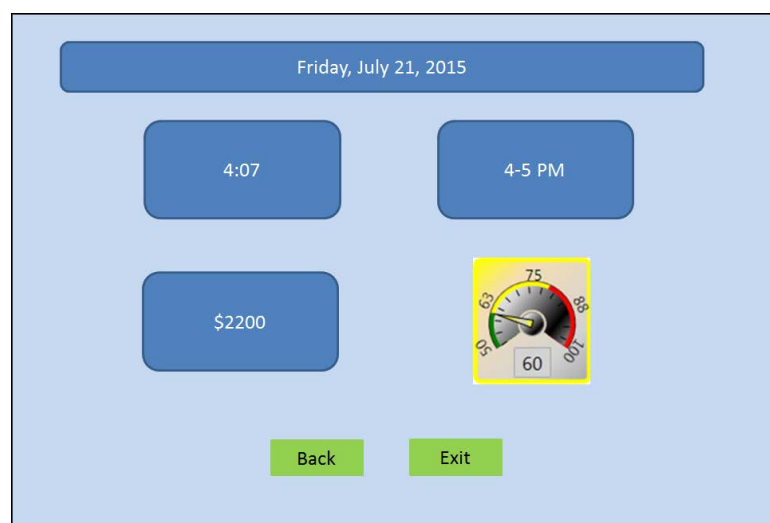


Figure 2 Dashboard On Demand

2. Review the information and then touch **Back** to return to the previous screen, or **Exit** to display the floating logo or logout screen.

Reserving space to display a Dashboard on a panel

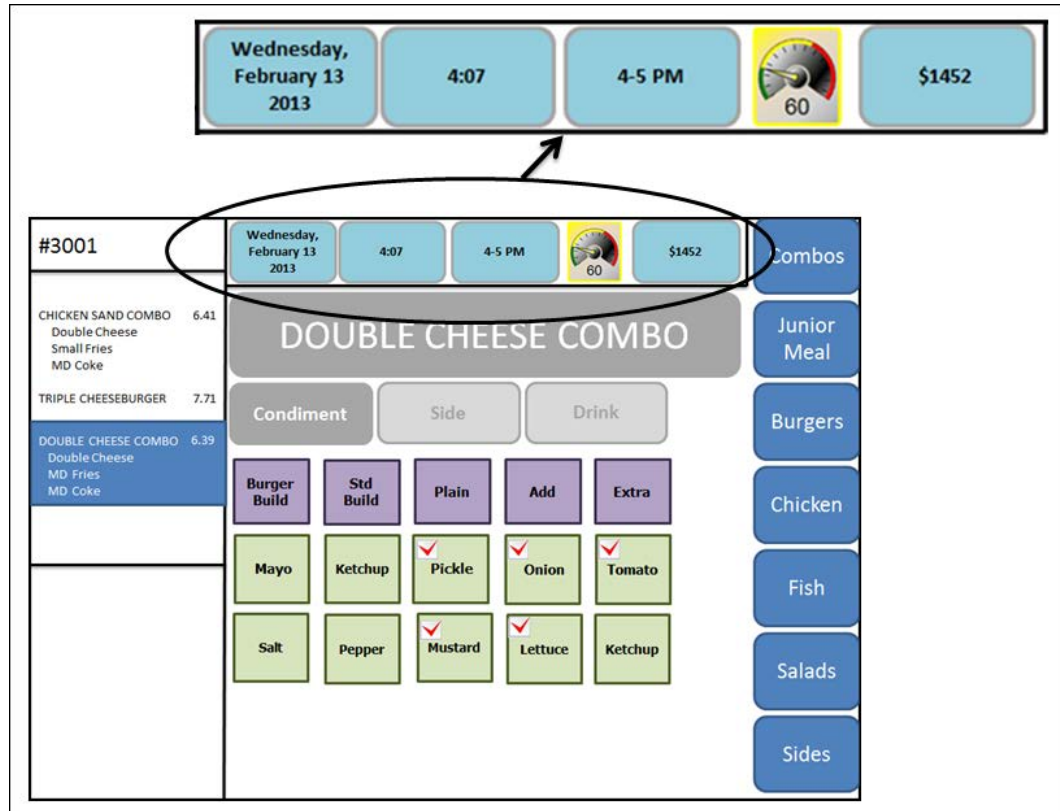


Figure 3 Sample Home Screen with Dashboard

Buddy's Burger Barn, home of the Bigger Better Beefy Buddy Burger, reserves space on a panel to continuously display the Dashboard. At any time, you can view the key performance indicators without requiring a log in or exiting the Dashboard panel.

Troubleshooting Dashboard

The following are helpful hints and troubleshooting tips provided for Dashboard.

Helpful hints

- Verify the Aloha Transaction Gateway and Aloha Transaction Gateway Helper services are started. If not, you must restart them.
- Also, does the date of business (DOB) match the system date? If not, correct the DOB. The Dashboard uses day parts and the event scheduler, so the dates must match.

Dashboard does not appear in place of the floating logo screen

If the Dashboard does not appear in place of the floating logo, verify you created and activated an event to initiate the display.

Created Dashboard does not appear when creating a Dashboard button

When creating the button, under the 'Function' group bar, select Dashboard from the 'Action' drop-down list to display available Dashboards. If the Dashboard you created does not appear in the list, you must add your Dashboard to a Dashboard screen. If you skip this step, the Dashboard does not appear when creating the Dashboard button.

Day part does not display on image or gauge

You must select 'Text only' when creating the widget. The day part cannot appear on an image or gauge.

Report does not display when button selected

It is necessary to designate which report appears when you touch the Dashboard button. When creating a Guest Check Count or Sales widget, select the desired report from the 'Link to report' drop-down list under the Function group bar on the Widget Properties dialog box.

Dashboard, Feature Focus Guide

NCR Voyix welcomes your feedback on this document. Your comments can be of great value in helping us improve our information products. Please contact us using the following email address:
Documentation.HSR@NCRVoyix.com